

2
0
2
3
—

Convenience living solution
for a positive life.

ruangnyaman

COMPANY PROFILE

Multidisciplinary Design Consultant
info@ruangnyaman.design

Convenience living solution for a positive life.

Never has before the value of convenience has been more obvious. Consultant design services provide answer to a lot of current and future convenience issues. These solutions are vital for the transition to a more sustainable society and the development of a safe and healthy micro environment for everyone.

RUANG NYAMAN is the far and wide series of vision and mission which can see and create an architectural design feat the scientific approaches, philosophies, natural scenery mindset, imaginations, and functional creativity from leading inspiration requirements that bring us to furthest way of living pleasure and memories.

The combination of well understandings through legacy inspiration experiences to achieve the new perspective of the good living space, as we creates and build today for tomorrow livings.

We founded the Company in mid 2021, yet we stand stronger than ever before, we experience growth, and things are going well in Ruang Nyaman. We owe our dedicated employees a profound thanks, as they are the one who make up the core driving force of our company. We also want to thank all our clients and business partners. only together we can continue to develop.

Welcome to Ruang Nyaman, a design consultant firm, and unique business partner.

TABLE OF CONTENTS

01 PROFILE

03

about
ruang nyaman

05

story

07

high
representatives

09

work
phase

11

media
publications

02 PORTFOLIO

13

built projects

31

ongoing projects

01 PROFILE



Convenience living Solution for a positive life

Our architectural design philosophy involves human senses, that we believe we are not just making the beauty of the building, our identity is to create the spatial-user-experience that could bring them to the furthest way of living pleasures and memories.

The foundation of our philosophy consist of 3 approach: scientific, sustainability, sensibility.

These components create a strong foundation towards all of our work and to be our way of thinking throughout the process. By allowing the philosophies to guide our practice, each project successfully creates a spiritual surroundings generating a convenience living solution for a positive life.



SCIENTIFIC

The scientific approach is a way of thinking, start from seeking the main issues to be solved by a design. We believe that through the scientific approach towards design, it is enhancing the design and user experience automatically. We consider all elements of scientific approach, including the site climate condition, technological aspects, connecting to the basic human behavior through each spatial conditions.

SUSTAINABILITY

Sustainability is the ability to achieve economic prosperity maintained through time while protecting the planet's natural ecosystem yet providing a high quality living environment to our clients.

SENSIBILITY

Spatial sensibility can guide us towards creating spaces as embodied experiences, rather than abstract constructs. We believe that create the building through the spatial sensibility approach, not just making an beauty of the building, our true identity of architecture is to make the space experience to the user that could bring them to the furthest way of living pleasure and memories.

A Journey Into the Long-lasting Memory Experience

Ruang Nyaman consist of a team of architects, artisan, designers, and contractors dedicated to making the convenience living solution nowadays. We are mainly based in **Ubud, Bali**. We create buildings, spaces, and master plans. We prioritize large-scale architecture projects in cities worldwide with the most significant positive social impact.

Designing mostly with local material (bamboo and woods) that have a low impact on the Bali environment but still create high performance building is our character, yet to honor the cultural about Bali, or each location of social culture.

We are working as practical architect designer with a natural organic style. Our philosophy is to design a soulful and interesting places which embrace and combine between the cultural aspects with modernity of the real world. The approach driving everything is lead from human experience rather than any fixed design dogma.

At the last, we are growing consultants, stand stronger than ever before, and making impact to the positive life, in Bali, Indonesia, and the known world wide.

UNIQUE USER EXPERIENCE

The end product of Ruang Nyaman unique approach to design vary, ranging from buildings of all types and sizes, to urban plans and visions, numerous publications, installations and exhibitions. Site issues and client limitation always be foundation for us to creating a world class art as a solution in design form, all is for creating a brand new innovation that brings us to the positive life we are living on.

Our character of thinking problem and solution are always involving the basic human sense (5 senses) to create a long-lasting product that will stick into our clients head for last.

QUALITY ASSURANCE

Ruang Nyaman has the creativity and high experience in dealing with various project types with small and large scale and also a variety of different functions. The combination of creativity with more technical experiences make us able to produce Innovative Designs without ignoring the Technical aspects.

HIGH DETAIL ORIENTED

Ruang Nyaman has a very detail oriented architects & designers. Clients will realize that our design has a great advantages in detail executions, because we tend to create the unique design as a solution for each project that requires us to customized the design that certainly different from general. We work to create an art with detailed product, to be able to always present the best detail for our clients.

Board of High Representatives



ANDRE PUTRA KURNIAWAN

Co-Founder, Strategic thinker,
& High Representative

Andre Kurniawan actively known as an entrepreneur who create wide variety of business model.

Since 2012, Andre began his entrepreneur life and run his first business in textile industry. After achieving his goal on textile industry, Just like a true polymath, he started another business with a wide variety of industries. Ranging from architectural, IT solutions, educational technology, and digital marketing agency. especially, he established the Ruang Nyaman design in mid 2021.

He positioned himself as a co-founder, the strategic thinker. Providing rails to the moving business train.

Our Team



IBNU ANNAS

Junior Architect



ALFA NANDA RAMADHAN

Co-Founder, Principle Architect,
& High Representative

Graduated from Brawijaya University in 2012, Alfa started his career as an architect in TSDS interior architects and Delution architect. He is interested in science and technology architecture, Alfa seek to discover that architecture is not about creating building, it is about returning what is already there as a responsibility that bring into sustainability. Partnership with Andre, they established Ruang Nyaman design in mid 2021 and runs many project in hospitality and leisure.

Design Process

01 ARCHITECTURE QUESTIONNAIRE

Please contact us via email: info@ruangnyaman.design, or make a call or Whatsapp in +62877 0291 8009, and you will get a link for 6 -minutes architecture questionnaire for us to learn:

- vision
- goals
- budget and timeframe

7-14 DAYS

This preliminary stage for us to review:

- site surveys
- scope of work
- design moodboard

Here is the magic begins, and we establish a working foundation.

02 FEASIBILITY STUDIES

03 CONCEPT DESIGN

This is the 1st architectural design phase, we will work on:

- 3D concept model
- presentation board
- concept building layout

This is the most exciting stage where you will get an initial feeling of the building shape, inspiration, and spatial organization.

15-30 DAYS

30 -50 DAYS

In this 2nd architectural design stage, we will work on:

- plans, sections, elevations
- vertical circulation
- floor, wall, ceiling details
- toilet details

This stage is where all details take their final shape.

At the end of this stage, we involve a variety of consultants depending on the scope. Most frequently these are the structural engineer, mechanical, electrical, and plumbing (MEP) engineer.

04 DESIGN DEVELOPMENT

age,
ations
ails
l details
e,
f consultants
pe of the project,
e consultants
ineer, and
plumbing engineer.

MENT

05 CONSTRUCTION DOCUMENTATION

In this 3rd and final architectural design stage we will work on:

- bidding Set (drawings issued to contractors for bidding the job)
- construction Documents Set (finished drawings with all its details)

The goal of this stage is to create the full set of building drawings that the contractor will use to build.

The Filing Set (documents/drawings needed for government approval) would be done by an external consultant.

30 DAYS

Once the design stage is finished, we will support you:

- interviewing general contractors
- respond to RFI (request for information) by potential contractors
- choosing contractors

The goal of this stage is to guide you and support you when choosing the right builders for your project.

06 BIDDING

07 CONSTRUCTION ADMINISTRATION

Once the building stage has begun, we will support you with:

- site visits to review the building process.
- respond to RFI (request for information) by contractors.

The goal at this stage is to ensure the delivery of an aesthetically and structurally sound architectural result.

30-50 DAYS

Media & Publication

Since Ruang Nyaman established, our projects often published by international media. This makes our works verified and become a public spotlight that attracted many people.



www.archdaily.com/990576/clan-living-hotel-and-co-living-space-ruang-nyaman?utm_source=lead_architect&utm_medium=e

designboom

www.designboom.com/architecture/clan-hotel-renovation-bali-bamboo-co-living-ruang-nyaman-10-19-2022/

contemporist

www.contemporist.com/nge-chairs-made-from-branches-add-a-natural-element-to-these-micro-apartments/

moool

<https://moool.com/en/clan-living-the-founder-by-ruang-nyaman.html>

World
Architecture
Community

<https://worldarchitecture.org/architecture-news/enfgm/ruang-nyaman-creates-intricate-facade-from-arched->

stir world
see. think. inspire. reflect.

<https://www.stirworld.com/see-features-clan-living-the-founder-a-new-model-of-micro-living-for-digital-nomads-in-bali>



n/lou
-
al-
o-



com
ng-
odel-
jital-

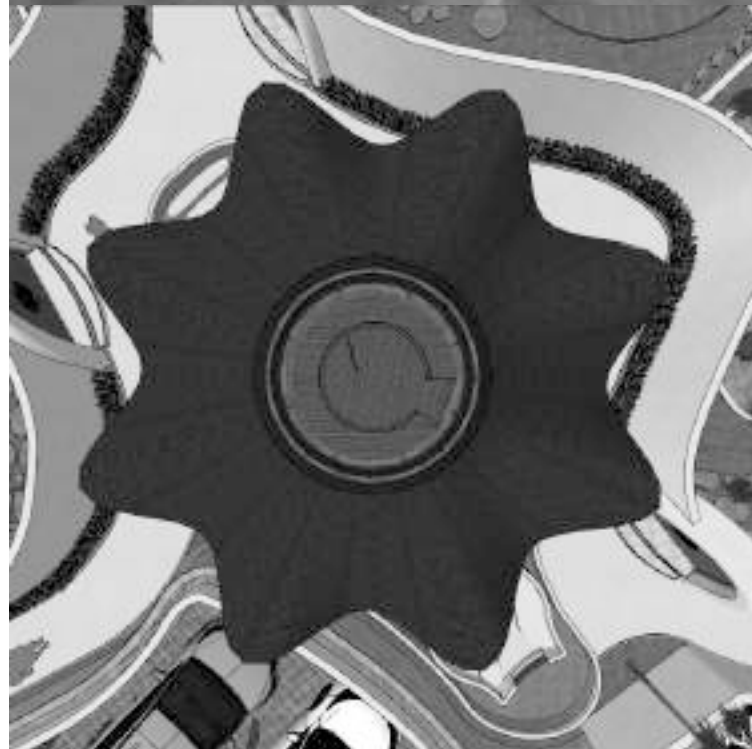
INTERIOR+DESIGN



www.interior.ru/place/14351-ruang-nyaman-oteli-koliving-dlya-tsifrovih-kochevnikov-v-ubude.html

<https://archello.com/project/clan-living-the-founder>

02 PROJECTS



COMPANY PROFILE - RUANG NYAMAN

PROJECT LIST

Clan Living The Founder

UBUD, BALI

Hospitality & Leisure Category

Located in the center of Ubud, Bali.
The vision of Clan Living was to create a new model of micro living where the entrepreneur finds their own space for private living as well as places to work, share ideas and gather with others.

PROJECT INFORMATION

ARCHITECT

Ruang Nyaman

PROJECT TYPE

Hospitality & Leisures

PRINCIPLE ARCHITECT

Alfa Nanda Ramadhan

CLIENT

CLAN LIVING

DESIGN TEAM

Ibnu Annas
Ivan Teja

LOCATION

Pengosekan Ubud, Bali, Indonesia

PROJECT ARCHITECT

Ivan Teja
Reynaldi Prasetyo

BUILDING AREA

698 sqm

CONTRACTOR

CLAN CONSTRUCTION

YEAR

2022

PHOTOGRAPHER

Danang Seta







New Micro Living Model for Entrepreneur

Located in the center of Ubud, Bali. The vision of Clan Living was to create a new model of micro living where the entrepreneur finds their own space for private living as well as places to work, share ideas and gather with others. Combining the paradox between working and vacation, the architect creates a new cozy working environment while expanding their network.

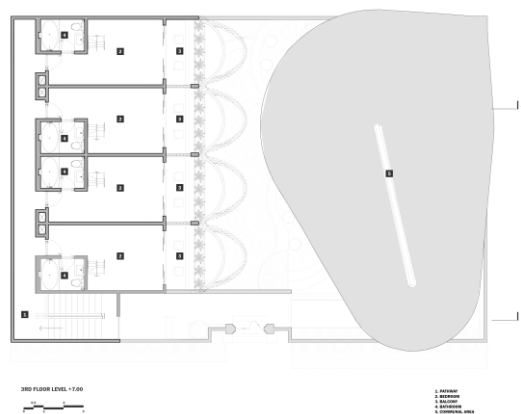
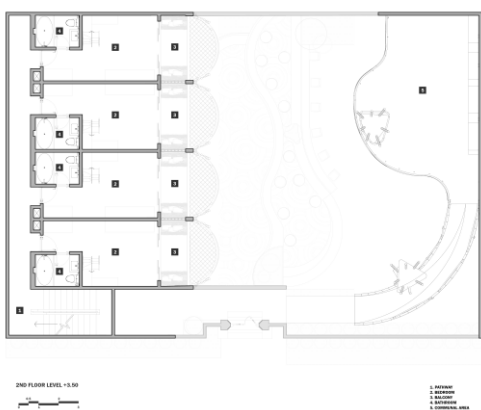
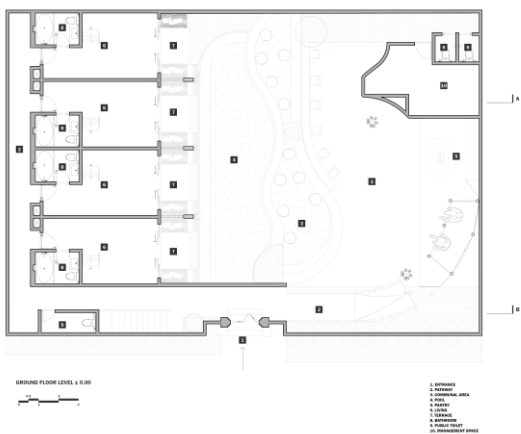
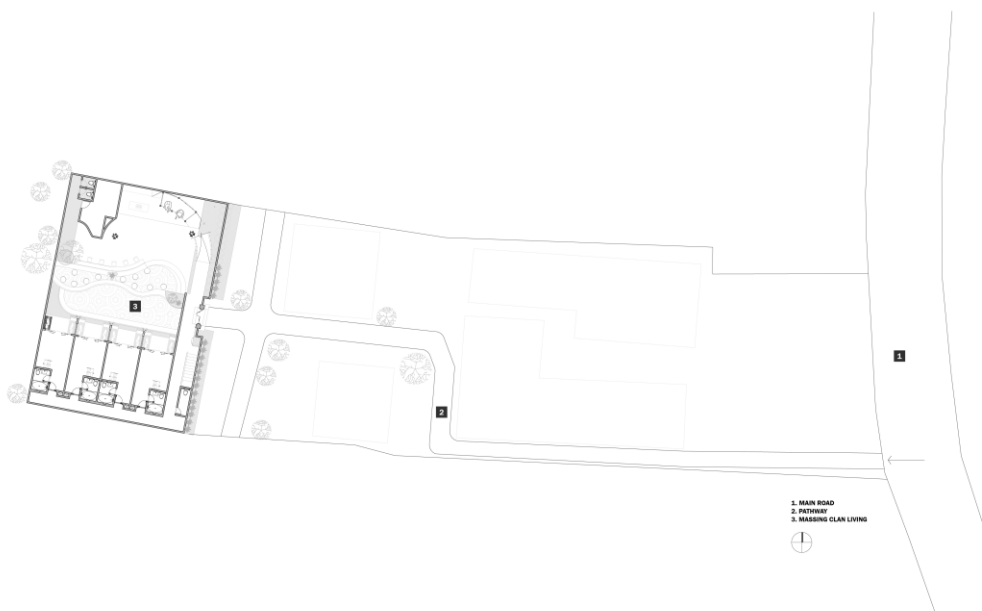
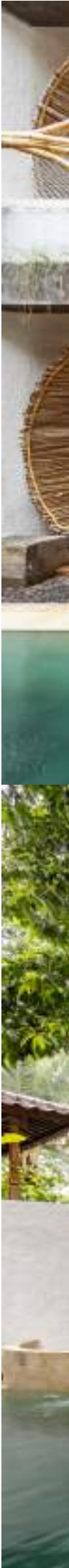
Designed from the existing structural building, Ruang Nyaman created the curved bamboo facades as the protagonist material, combining with other natural materials such as natural stones, coffee branches, wood to react and enhance the cultural context of this site, and developed with sustainable considerations.

The idea was to evoke their spatial sense that gives long lasting memories in their lives, yet as a symbol of appreciation for the local culture in a way to convey the sense of togetherness.

The communal area is set with a massive bamboo roof, spanning two levels with a wooden ramp connecting the two floors. On the upper level, they can work and enjoy the work while enjoying the pool view and curves pattern calming the eyes, evoking a soothing atmosphere. The ground level boosts interactions and gathering while soaking their feets under water. In addition to the communal space, it features a fully equipped kitchen and pantry as they gather and share. The private areas were built with 3 floor levels, ensuring each level has a different experience.

The ground level includes a big terrace with arranged coffee branches as the lounge chair, with direct access to the pool. Second level was built with the same coffee branches, in addition giving the hanging nets as a hammock as the focal point to give a different way to experiencing the balcony. And the third floor features a long work stool table with exciting views towards its surroundings. The interior design uses a mezzanine system with a unique staircase to connect the living room and bedroom. They are all designed to maximize the user's sense of comfort, combining work and vacation.

For the facade, arch shaped bamboo conveys the sense of flexibility towards the digital nomads era of working. Using a secondary skin facade that is arranged in a hollow and with enlarged shape on top of it, as a natural response to the surrounding environment, from visibility to sun exposure. The Clan Living will grow throughout time, and make it a strong foundation in understanding spaces through new ways of view to achieve a new perspective of a good living space, as we create and build today for tomorrow's living.





COMPANY PROFILE - RUANG NYAMAN



CLAM LIVING



COMPANY PROFILE - RUANG NYAMAN



RUANG NYAMAN
2022



COMPANY PROFILE - RUANG NYAMAN



CLAN LIVING

MFG Showroom

TANGERANG, BANTEN

Commercial Category

MFG Showroom was made to enhance their product selling on fashion business, mainly targeted to mid age woman.

PROJECT INFORMATION

ARCHITECT

Ruang Nyaman

PROJECT TYPE

Commercial

PRINCIPLE ARCHITECT

Alfa Nanda Ramadhan

CLIENT

My Fashion Grosir

DESIGN TEAM

Ivan Teja
Ibnu Annas

LOCATION

Green Lake City, Tangerang

PROJECT ARCHITECT

Ibnu Annas

BUILDING AREA

270 sqm

CONTRACTOR

CLAN CONSTRUCTION

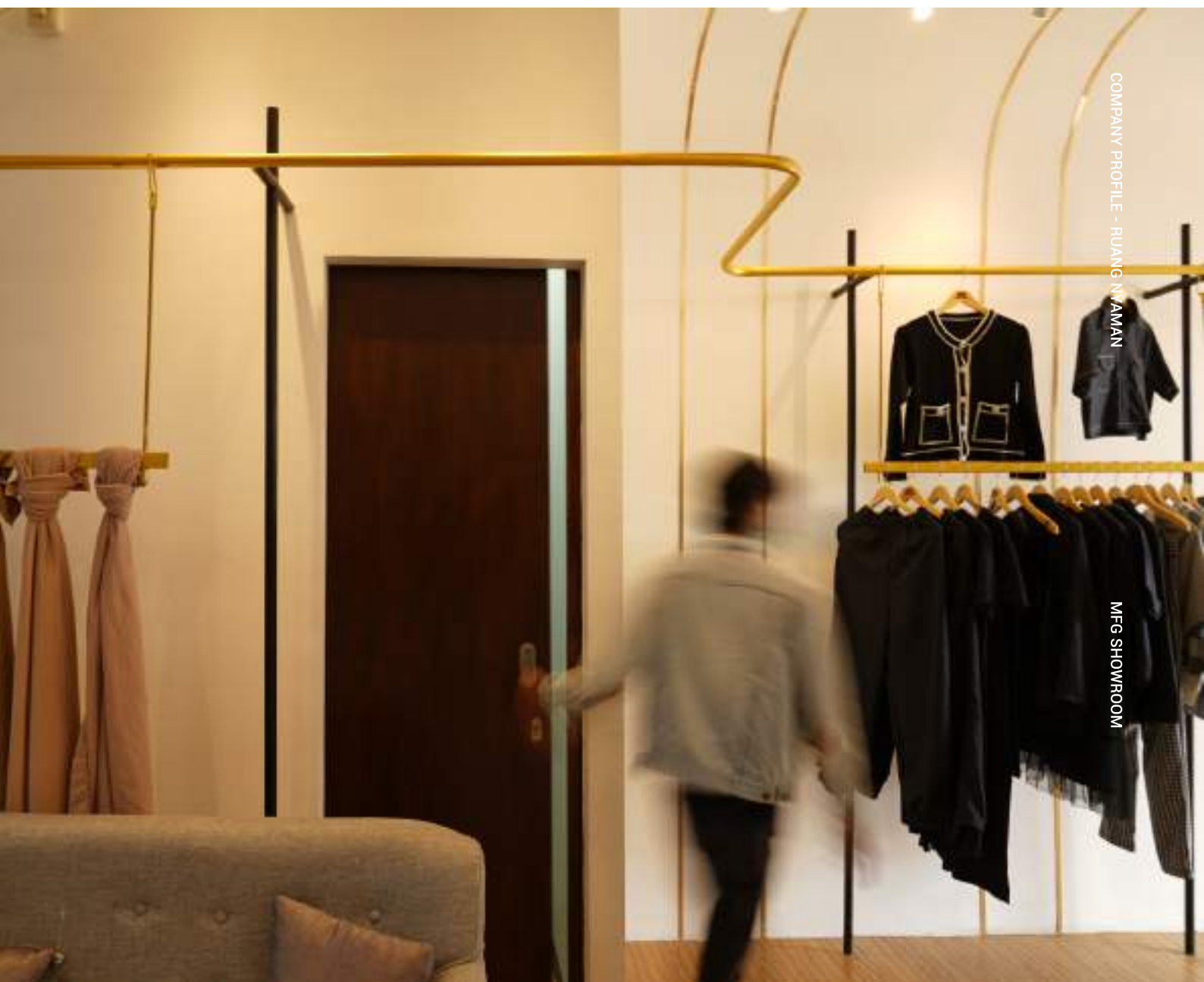
YEAR

2021

PHOTOGRAPHER

Private





COMPANY PROFILE - RUANG NYAMAN

MFG SHOWROOM



COMPANY PROFILE - RUANG NYAMAN

RUANG NYAMAN
2022

CONTINUOUS PIPE AND ARCH AS A PROTAGONIST

Starting from the needs and limited space, the client wants to enhance the interior building looks spacious and more feminine, yet evokes the luxury with simple materiality.

This building has 4 level floor, the first one as a showroom, with rounded and arch shaped concept building to create a feminine looks to this interior.

The hanger, are made from customized pipe steel that welded into single-continuous hanging surrounding the interior building. Coated with bronze paint combined with natural white lighting colors to evokes the natural shiny into its reflections.



COMPANY PROFILE - RUANG NYAMAN



RUANG NYAMAN
2022







COMPANY PROFILE - RUANG NYAMAN



MFG SHOWROOM

Clan Living The Lovers

SEMINYAK, BALI

Hospitality & Leisure Category

Located in the center of Seminyak Bali.
The vision of The Lovers was to create a new segmented honeymoon resort and villas that has BDSM concept as they Unique Selling Proposition. This place dedicated to couple that have the desires of their fetish, yet giving a pleasure and relax about its nature surrounding.

PROJECT INFORMATION

ARCHITECT

Ruang Nyaman

PROJECT TYPE

Hospitality & Leisures

PRINCIPLE ARCHITECT

Alfa Nanda Ramadhan

CLIENT

Bali Government

DESIGN TEAM

Ibnu Annas
Ivan Teja

LOCATION

Seminyak, Bali, Indonesia

PROJECT ARCHITECT

Ivan Teja
Ibnu Annas
Reynaldi Prasetyo

BUILDING AREA

1220 sqm

STATUS

Construction Tender

YEAR

2022





COMPANY PROFILE - RUANG NYAMAN

THE LOVERS

THE LOVERS CLAN LIVING





Extraordinary Experience for Having Honeymoon

Located in Seminyak, Bali. The vision of The Lovers was to create a very segmented market about honeymoon resort and villas. The BDSM as a main fetish are the main concept that we proposed to become the unique selling proposition for this project. Combined with natures, this project expectation is to feel the extraordinary experience about wildest honeymoon, meanwhile combined with calming sense to its surrounding nature conditions.

Ongoing building this project on 1400 sqm, the Lovers are divided into 7 building consists about Lobby, Unit A and Unit B building. The structure and facades are rounded that becoming the protagonist shape to convey the feminine and virginity.

All of this building are created from natural bamboo as a main material, and concrete sandstone as a enforcement for its irregular structure system.

The ground level includes a big continuous swimming pool intersecting with interior building, with floating jacuzzi as its surplus facility. The continuous pool is set in 1,3m depth to ease the way the couple walk or interacting within water.

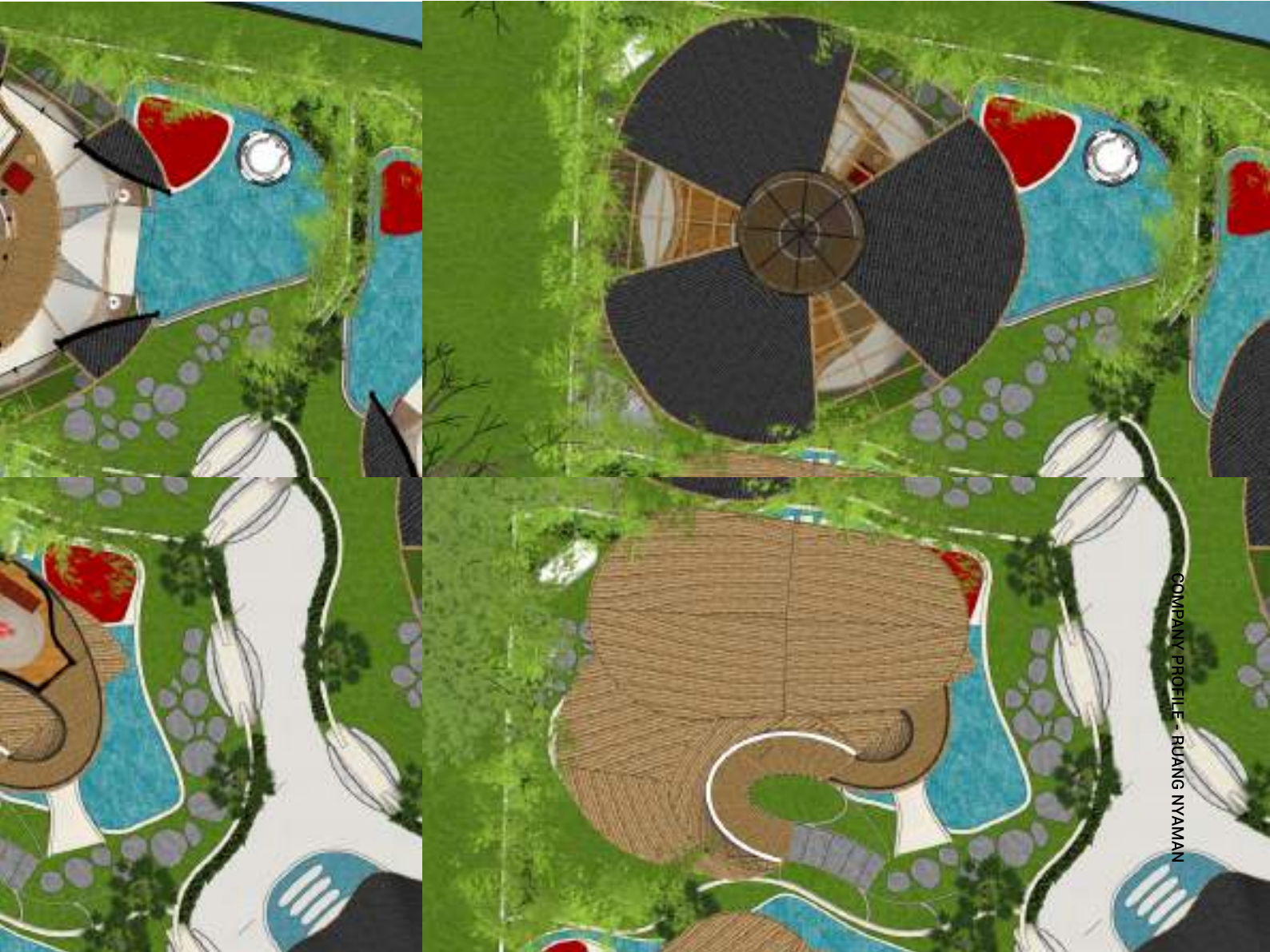
The second floor includes a big hammock to provide to its exciting surrounding view. and the main room is a red room as we called, this room is to provide their fetish about honeymoon, facilitated with various item correlating with BDSM style.



COMPANY PROFILE - RUANG NYAMAN



RUANG NYAMAN
2022



COMPANY PROFILE - RUANG NYAMAN



THE LOVERS



COMPANY PROFILE - RUANG NYAMAN



RUANG NYAMAN
2022



COMPANY PROFILE - BUANG NYAMAN



THE LOVERS

Torigin Village

BOGOR, INDONESIA

Hospitality & Leisure Category

Located near Taman Safari Bogor.
This Glamour resort was to create a luxury resort yet provides a business model concept that connect with its design facade. The client wants to create their brand awareness about poultry business, egg as its icon, connected with the rounded facades.

PROJECT INFORMATION

ARCHITECT

Ruang Nyaman

PROJECT TYPE

Hospitality & Leisures

PRINCIPLE ARCHITECT

Alfa Nanda Ramadhan

CLIENT

Private

DESIGN TEAM

Alfa Nanda Ramadhan

LOCATION

Bogor, Indonesia

PROJECT ARCHITECT

Ibnu Annas

BUILDING AREA

3700 sqm

STATUS

Design Development

YEAR

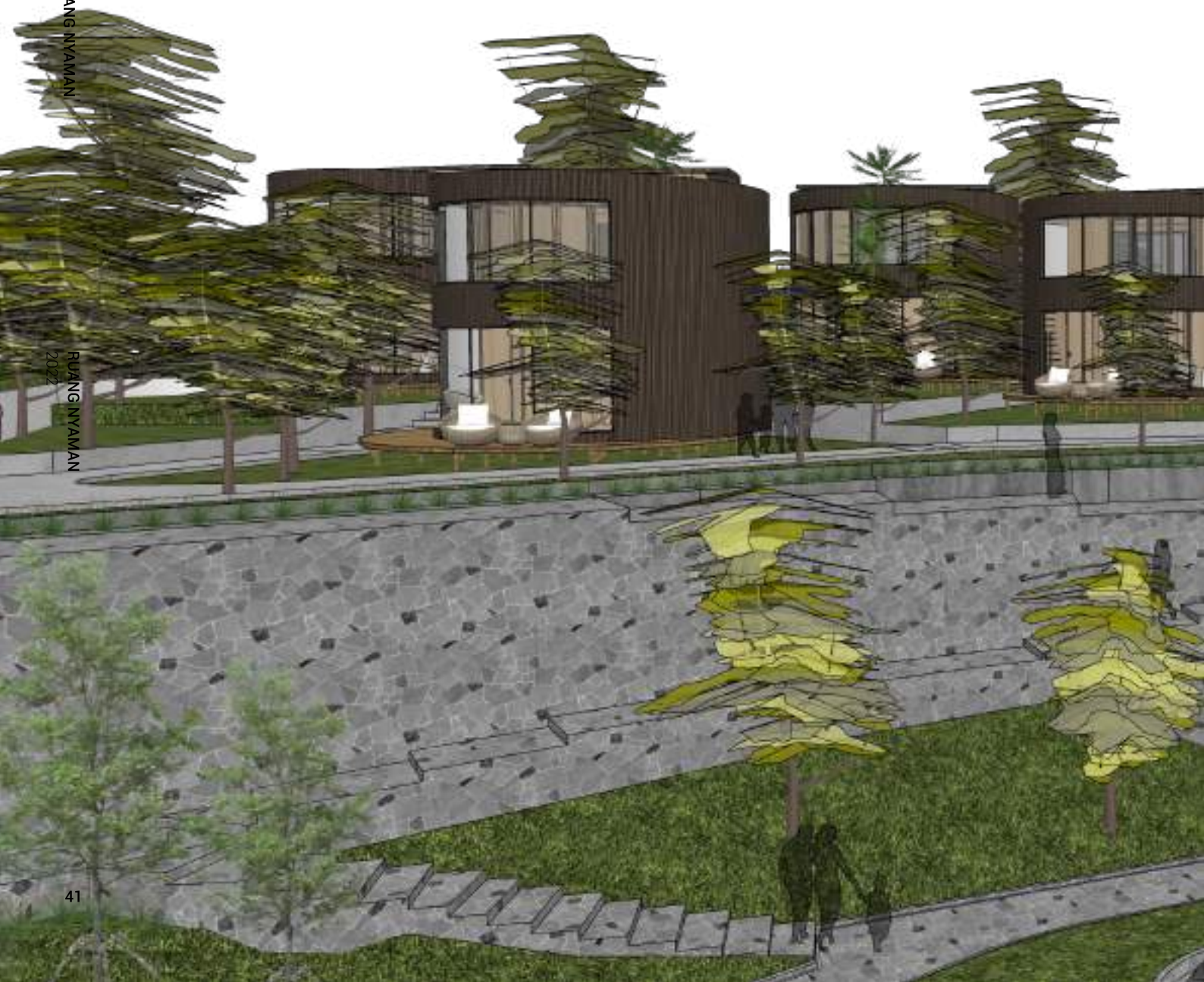
2022





COMPANY PROFILE - RUANG NYAMAN

TORIGIN VILLAGE



Well Rounded Shape Resort to Enhance Business & Brand Awareness

Located in center of Puncak, Bogor. This Torigin village provides a luxury resorts combined with their shop about poultry. The idea was to create a dedicated area like cimory but it is combined with luxury resort as their main selling proposition.

The torigin was made from egg in japan language, so it is the facade, using rounded shape to its main facade simulating the poultry egg to enhance their brand awareness about the business.

This site containing 12 units of tiny cabin and 1 big ballroom to provide the ceremonial events.

The ground level includes outdoor terrace towards its surrounding, living and dining room, also the bedroom.

About second level it is just dedicated to one single big master bedroom area to maximize the feeling of vacation and its view about the site condition.

COMPANY PROFILE - RUANG NYAMAN

TORIGIN VILLAGE







COMPANY PROFILE - RUANG NYAMAN



TORIGIN VILLAGE



COMPANY PROFILE - RUANG NYAMAN



RUANG NYAMAN
2022



COMPANY PROFILE - RUANG NYAMAN



TORIGIN VILLAGE

The Oasis Villa

TABANAN, BALI

Hospitality & Leisure Category

Located in Tabanan, Bali.
The vision is to create villa that provides a mediterrain vibes that combined with climate in Tabanan, the client needs on this small sized land could provides at the maximum area of units.

PROJECT INFORMATION

ARCHITECT

Ruang Nyaman

PROJECT TYPE

Hospitality & Leisures

PRINCIPLE ARCHITECT

Alfa Nanda Ramadhan

CLIENT

Private

DESIGN TEAM

Ivan Teja

LOCATION

Tabanan, Bali, Indonesia

PROJECT ARCHITECT

Ivan Teja

BUILDING AREA

172 sqm

STATUS

Bidding Construction

YEAR

2022





COMPANY PROFILE - RUANG NYAMAN

THE OASIS



Mediterrain Concept That Brings the Vibes and Sense of Tropical Resort

Located in Tabanan, Bali. This stunning villa was to create a compact space in tiny land. The main concept was to exposing their structural stairs surrounding the building as the focal point of this project. Bringing single materiality concept to this villa, from floor to wall covering makes this mediterranean works perfectly with the existing tropical climate.

Consisting 3 level floor, stacking with each other massing like cubical shape to convey the sense of compact house. The ground floor, second, and third floor was created just 1 single bedroom each floor to providing the simplicity yet privacy between them.

The ground level itself has a swimming pool, sunken seating and fixed dining room made from concrete sandstone color.



THE OASIS

COMPANY PROFILE - RUANG NYAMAN



RUANG NYAMAN
2022



COMPANY PROFILE - RUANG NYAMAN



THE OASIS



COMPANY PROFILE - RUANG NYAMAN



RUANG NYAMAN
2022



COMPANY PROFILE - RUANG NYAMAN



THE OASIS

Humble House

MALANG, JAWA TIMUR

Residential Category

Located in Malang, Jawa Timur.
The vision is to create house that made for introvert person. This house is an imagery from the owner, introvert and humble.

PROJECT INFORMATION

ARCHITECT

Ruang Nyaman

PROJECT TYPE

Residential

PRINCIPLE ARCHITECT

Alfa Nanda Ramadhan

CLIENT

Private

DESIGN TEAM

Ibnu Annas
Alfa Nanda Ramadhan

LOCATION

Tabanan, Bali, Indonesia

PROJECT ARCHITECT

Ibnu Annas

BUILDING AREA

172 sqm

STATUS

Bidding Construction

YEAR

2022







A Clean and Simple Facades to Evokes The Beauty in Minimal House

Located in Malang, Jawa Timur. This private building was a mirroring image to its owner. The client want to design the house that perfectly simulating like him self, a introvert person.

This clean and simple facades is one of the way we create to simulate and evokes the simple and introvert like the client.

Consisting with 3 level, the ground floor consists living dining with infinity pool view, yet the client want second living room separate with the main building to welcoming the public guest to his home.

The second level was created to convey they private living such as living room, bedroom, etc.

And the third room consisting gym area and full of workplace for the owner of this house since he runs the business mobile.

COMPANY PROFILE - RUANG NYAMAN

HUMBLE HOUSE



COMPANY PROFILE - RUANG NYAMAN



RUANG NYAMAN
2022





COMPANY PROFILE - RUANG NYAMAN



RUANG NYAMAN
2022



COMPANY PROFILE - RUANG NYAMANN



HUMBLE HOUSE



COMPANY PROFILE - RUANG NYAMAN



RUANG NYAMAN
2022



Contact Us for more information

For further information about our company
or press enquiries with regards
to publication of our work or other
please contact us

Ruko Crown Blok F-7,
Green Lake City, Tangerang,
Indonesia



+62 877 0291 8009
+62 812 9370 2323



[ruangnyaman.design](https://www.instagram.com/ruangnyaman.design)



info@ruangnyaman.design



www.ruangnyaman.design